

KaVo. Turbines, straight and contra-angle handpieces.

You know what you want.  
We have got what you need.

The KaVo handpiece series –  
the perfect handpiece for every dentist.



### KaVo master series

Enjoy maximum power with innovative KaVo comfort.

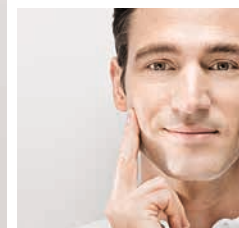
- Highest treatment quality
- Maximum treatment comfort
- Highest patient satisfaction



### KaVo expert series

Rely on advanced KaVo performance.

- Best durability at unbeatable prices
- Proven configuration solutions
- Highest efficiency



### KaVo smart series

Start safe with affordable KaVo quality.

- Entry level price for the world of KaVo
- Sound basic configuration
- Made in Germany



KaVo. Turbines, straight and contra-angle handpieces.

Start safe with  
affordable  
KaVo quality.

## KaVo smart series



KaVo. Dental Excellence.

KaVo Dental GmbH · D-88400 Biberach/Riß · Telefon +49 7351 56-0 · Fax +49 7351 56-1488 · www.kavo.com



KaVo. Dental Excellence.

## Durable, reliable quality made by KaVo.



### Your KaVo quality benefit:

**One hundred years of experience** and more than **five million KaVo handpieces** sold reflect Dental Excellence throughout the world. Just four of many proofs of KaVo quality:

- > In our production, we place the highest emphasis on precision and have the strictest in-house quality standards, including: **clean room assembly in Biberach.**
- > While up to 70% of the handpieces made by other manufacturers require a major repair within the first four years, this only applies **to 30%** of KaVo handpieces. This puts KaVo on top in this market (source: GfK ZaBus survey March 2009).
- > The **repeated purchase rate of 98%** reflects the **extreme satisfaction** level of dentists with the quality of our products.
- > **Periodical certification** ensures consistently high quality. KaVo is certified according to EN ISO 9001 and EN ISO 13485.

### Your KaVo system solution benefit:

Benefit from your KaVo System, with perfectly matched solutions in terms of **efficiency and protection of investment:**

- > **Avoid costly new purchases** and simply upgrade your handpiece bulb for the new KaVo MULTI LED.
- > **The long-term availability of replacement** parts significantly increases the protection of your investment.
- > With all new developments, we place much emphasis on matching system solutions allowing you to retro-fit your system at a later time **in a cost-efficient manner.**

### Your KaVo innovation benefits:

Through innovation originating from passion and **more than 2,200 patents** and registered designs both domestic and abroad, we are contributing to your everyday success. Just a few successful examples:

- > **KaVo COMFORTdrive**, the first contra-angle handpiece with an integrated electric motor combines power and lightweight design.
- > The **exchangeable KaVo Spray Microfilter** optimises spray cooling and reduces service costs.
- > The **turbine's automatic pressure regulating valve** ensures consistently good performance whilst maintaining powerful torque.
- > The **patented head and knee angles of 100° and 19°**, respectively, of KaVo handpieces ensure optimal access to the preparation area.
- > **SONICflex Quick-Coupling** accelerates and simplifies the exchange of scaler tips.

### Your KaVo safety benefits:

KaVo provides the foundations **for optimal treatment safety** and protects the dentist, assistant, and patient against infections during every treatment. How this is done by KaVo is evident from some practical examples:

- > The **collet retention** force of up to 30 N in every product line far exceeds any standard requirements and ensures optimal support for your burs in the long-term.
- > **Innovative hygiene solutions**, such as the built-in non-return valve in the GENTLEsilence series and the easily cleaned and sterilisable surfaces, protect all individuals involved against cross-contamination.



More than **5** million handpieces sold throughout the world

## KaVo smart series

1. Entry level price for the world of KaVo.
2. Sound basic configuration.
3. Made in Germany.





# KaVo smart series

Entry level price for the world of KaVo – the handpieces of the KaVo Smart Series.

If you aim to reach the heights, you need solid foundations. The KaVo Smart Series offers the ideal prerequisites. Enter the world of Dental Excellence and experience KaVo quality and reliability, at an unbeatable price.

KaVo Smart Series – Start safe with affordable KaVo quality.



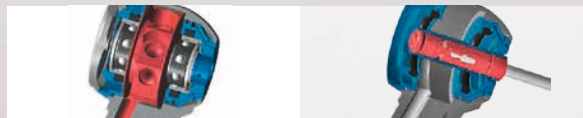
## 1. Economical entry into the world of KaVo.

- > **Low price** for entry into the KaVo world of dental excellence



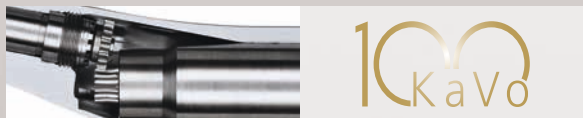
## 2. Solid, basic configuration.

- > **High torque**, thanks to 16 Watt power output, for rapid, efficient preparation
- > **KaVo safety standards**, such as a chuck retention force of up to 30 N
- > **Always the right speed** for each individual clinical indication, thanks to various gearbox ratios



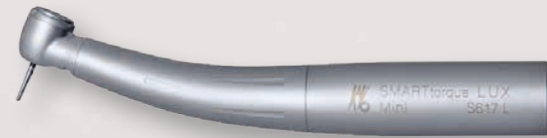
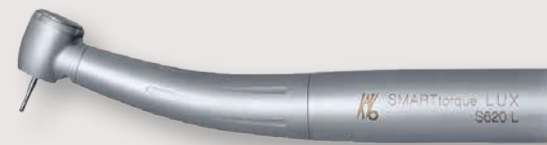
## 3. Made in Germany.

- > **Proven quality**, that has made KaVo into the worldwide market leader
- > **100 years of experience** goes into each product
- > **High quality preparation**, such as one-piece handpiece casings



# Turbines with MULTIflex connection

**NEW** 16 Watt power  
Ceramic bearings



## SMARTtorque S619 L/C / S615 L Mini

- > Light and non light version
- > **Head versions: standard** (h: 14.5 mm) or **mini** (h: 12.3 mm)
- > **Reliable 16 Watt power**, for efficient and safe preparation
- > **Different model / price versions**
- > **High safety**, with chuck retention force up to 30 N
- > **4-port spray**, for optimum cooling effect
- > Enhanced, **anti-reflux effect**
- > New long-life, **ceramic bearings**

For order details, consult latest price list

# Turbines with fixed connection



## SMARTtorque S609 C / S605 C Mini

- > **4-hole standard connection** (Midwest)
- > **Head versions: standard** (h: 14.5 mm) or **mini** (h: 12.3 mm)
- > **Reliable 16 Watt power**, for efficient and safe preparation
- > **Different model / price versions**
- > **High safety**, with chuck retention force up to 30 N
- > **4-port spray**, for optimum cooling effect
- > Enhanced, **anti-reflux effect**
- > New long-life, **ceramic bearings**

For order details, consult latest price list

**NEW** now with 2-hole standard connection



## SMARTtorque S608 C

- > **2-hole standard connection** (Borden)
- > **Head version: standard** (h: 14.5 mm)
- > **Reliable 16 Watt power**, for efficient and safe preparation
- > **High safety**, with chuck retention force up to 30 N
- > **4-port spray**, for optimum cooling effect
- > Enhanced **anti-reflux effect**
- > **KaVo Push-button chuck system**, for rapid bur changing
- > **Ceramic ball bearing**

# MULTIflex couplings



## MULTIflex LUX coupling 460 LED

- > With **KaVo MULTI LED**
- > **More flexibility**, due to a connection that is compatible with many handpieces
- > **Increased efficiency**, as fast handpiece interchange is possible

For all KaVo turbines with MULTIflex connection, SONICflex airscaler, PROPHYflex polisher, CORONAflex, all INTRAflex LUX motor-handpieces, airmotor 181 M, RONDOflex

Mat. no. 1.007.3201

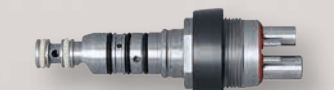


## MULTIflex LUX coupling 460 LE

- > With the proven, **KaVo high-pressure, halogen bulb**
- > **More flexibility**, due to a connection that is compatible with many handpieces
- > **Increased efficiency**, as fast handpiece interchange is possible

For all KaVo turbines with MULTIflex connection, SONICflex airscaler, PROPHYflex polisher, CORONAflex, all INTRAflex LUX motor-handpieces, airmotor 181 M, RONDOflex

Mat. no. 1.001.7599



## MULTIflex coupling 460 E

- > **More flexibility**, due to a connection that is compatible with many handpieces
- > **Increased efficiency**, as fast handpiece interchange is possible

For all KaVo turbines with MULTIflex connection, SONICflex airscaler, PROPHYflex polisher, CORONAflex, all INTRAflex LUX motor-handpieces, airmotor 181 M, RONDOflex

Mat. no. 1.001.7600

**12** months warranty.



KaVo. Straight and contra-angles.

## INTRAmatic E Series – highly-regarded quality.

- > **The handpiece sheath is made of a single part** – so there are no joints, grooves or areas where contamination might accumulate
- > **Well-balanced handling** and good grip
- > **There is more working space** in the molar region thanks to 100° head angle
- > **Pushbutton chuck**



### INTRAmatic 23 ES

- > Transmission ratio 1:3.3
- > **For turbine burs**
- > Also suitable for use with **external saline**

Mat. no. 1.004.5380



### INTRAmatic 20 ES

- > Transmission ratio 1:1
- > **For contra-angle burs**

Mat. no. 1.003.4830 (20 ES) with external spray  
Mat. no. 1.003.1107 (20 E) without spray, only fits  
air motor 181 K and 181 KB



### INTRAmatic 80 ES

- > Transmission ratio 1:1
- > **For turbine burs**

Mat. no. 1.004.4375 (80 ES) with external spray  
Mat. no. 1.004.6401 (80 E) without spray, only fits  
air motor 181 K and 181 KB



### INTRAmatic 14 ES

- > Step-down ratio 4:1
- > **For contra-angle burs**

Mat. no. 1.003.4831 (14 ES) with external spray  
Mat. no. 1.003.1108 (14 E) without spray, only fits  
air motor 181 K and 181 KB



### INTRAmatic 10 ES

- > Transmission ratio 1:1
- > **For straight burs**
- > **Secure working** thanks to chuck retention strength of 40 N, even with larger burs

Mat. no. 1.003.1111 (10 ES) with external spray  
Mat. no. 1.003.6977 (10 E) without spray, only fits  
air motor 181 K and 181 KB



KaVo. Prophylaxis and care.

## The basis for perfect prophylaxis.



### INTRAmatic 19 ES

- > Step-down ratio 7.4:1
- > For use with **disposable Prophy heads** or **sterilisable steel Prophy heads** with Doriot connection

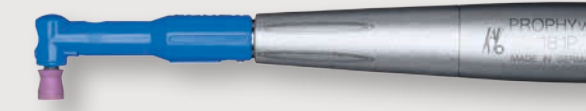
Mat. no. 1.004.4503 (19 ES)  
Mat. no. 1.004.6403 (19 E), only fits  
air motor 181 K and 181 KB



### INTRAmatic 31 ES

- > Step-down ratio 4:1
- > For **snap-on and screw-in prophy attachments**

Mat. no. 1.003.1109 (31 ES)  
Mat. no. 1.003.6976 (31 E), only fits  
air motor 181 K and 181 KB



### PROPHYwiz 181 P

- > Prophylactic handpiece with **integrated air motor**
- > Maximum speed **3,000 min<sup>-1</sup>**
- > For attachment of **disposable Prophy heads** or **steel Prophy heads** with Doriot connection
- > **Rotates 360°**

Mat. no. 1.003.2278



### SONICflex 2000 N

- > Aircaler with a frequency of **6,000 Hz**
- > **Amplitude of 160 µm** for gentle and effective removal of debris through elliptical motions
- > Selection of more than **50 tips** for a broad range of applications

Mat. no. 0.571.5020

## Look after your investment with perfect handpiece care.

### QUATTROcare PLUS

- > **Cost-efficient care for your handpieces**
- > **Optimum quality of care** with the KaVo QUATTROcare plus care spray
- > **Easy efficient handling** and fast programme sequence
- > **Low purchase and consumables costs**

Mat. no. 1.008.3805

### KaVo Spray

- > Manual handpiece/ turbine care
- > **Effectively preserves value**

Mat. no. 0.411.9640



KaVo. Dental Excellence.