



The new generation STATIM®

The gentleness you know, a level
of interactivity never seen before

SciCan

Your Infection Control Specialist™

www.scican.com



Now, there's a STAT/M® that's perfect for every practice.

Drawing on over 50 years of innovation, the leader in autoclave technology has created a complete line of STAT/M Cassette Autoclaves – designed to meet the needs of every size of practice. The STAT/M family comprises the fastest, most innovative autoclaves available today.

Employing a patented sterilization process, SciCan has developed the STAT/M family to address the full range of instrument sterilization applications – from hygienists to multi-doctor practices – providing each with a superior solution in sterilization.

Doctors around the world rely on STAT/M.

Healthcare practitioners in over 90 countries around the world rely on STAT/M to protect their patients and staff from infection – with sterilized instruments in just minutes.

In 1989, SciCan transformed the industry, developing the world's first compact sterilization unit designed to meet the growing need for handpiece sterilization. Today, the STAT/M still boasts superior cycle times and processes for both wrapped and unwrapped cycles. In fact, the STAT/M Cassette Autoclave® sterilizes up to ten times faster than traditional 'chamber style' units.

Employing a proprietary positive pressure pulse displacement (PPPD) technology – using saturated steam to remove air and effectively sterilize instruments – the STAT/M Autoclave ensures clinicians always have an ample supply of instruments ready for use.

STAT/M'S Speed

Removable and Portable Cassette

STAT/M sterilizes handpieces and instruments for immediate use in as little as 6 minutes. The removable cassette facilitates aseptic transport of unwrapped instruments directly to point-of-use.

Increases Efficiency

Fast point-of-use sterilization makes turnaround a priority, increasing efficiency and virtually eliminates instrument bottlenecks.

Gentle on Instruments

Our state-of-the-art steam technology is gentle on both solid and hollow instruments.

STAT/M technology defined – what makes STAT/M different?

Immediate Steam Generation

Unlike conventional autoclaves that need to heat an entire reservoir of water, STAT/M uses only a small, specific amount of water required for each cycle. Water is introduced into a heating device referred to as a 'steam generator', rapidly heated and converted to steam in mere seconds.

Air Removal

Using PPPD technology and our patented steam injection process – air is automatically forced out of the sterilization chamber.

Cassette System

The thin stainless steel walls of STAT/M's fully-removable cassette, (or sterilization chamber) allow for rapid heating and cooling of the chamber. As a result, STAT/M meets the conditions for sterilization and drying in a fraction of the time required by a conventional autoclave.

Drying Technology

The STAT/M 2000 G4 and 5000 G4 have each been designed to provide you with a complete solution: rapid sterilization balanced by rapid drying. Introducing STAT/M Dri-Tec drying technology.



Dri-Tec[®] – Convection Heat Drying Technology

The STAT/M 2000 G4 uses convection heat to dry instruments by utilizing the remaining heat in the system after the sterilization phase. Heat is captured and released into the cassette, drying wrapped instrument loads in as little as 10 minutes.



Dri-Tec[®] – Radiant Heat Drying Technology

The STAT/M 5000 G4 uses heat generated by the sterilization cycle which is 'absorbed' by unique drying plates located in the sterilization chamber. Heat is transferred from the drying plates directly to instruments resulting in accelerated, full load drying in as little as 15 minutes.

Introducing the new, 4th generation STAT/M by SciCan.

>> Fast

STAT/M's unmatched speed and dependability have made STAT/M the world's best-selling autoclave. And its patented gentle technology has also made STAT/M the world's favourite.

>> Forward

The STAT/M G4 will offer you a level of interactivity never seen before. The STAT/M G4, through its LCD touch screen control and networking capability, has been designed to provide you with unprecedented ease of use and puts the user in total control.



Touch

A large 3.5" high-resolution touchscreen offers a vivid display of messages, current cycle information and customizable colours all with extraordinary clarity. Fully adjustable contrast levels let you optimize the screen to the lighting in your steri-centre.

Connect

Through your networked portal, you can view not only your STAT/M's current operations in real time, you can also access cycle history, printing and validation information, and also sterilization records. Capable of sending emails with cycle information errors directly to your dealer, your STAT/M G4 will let qualified technicians know when service is imminent.

Protect

Patient safety relies on attention to detail. The STAT/M G4 supports verifiable processes that are PIN protected with user-defined IDs so that staff members can be required to authorize a cycle. This encourages extra attention to process and creates a safer environment for both staff and patients.

Collect

An undocumented sterilization cycle might as well not have been performed. With each cycle, information must be stored to protect your office and your patient. The integrated DataLogger stores all cycle information for the lifetime of the unit, which is accessible through multiple channels such as: a USB port for manual retrieval; an Ethernet connection for web based archiving or desktop printing; or a RS232 port for an external printer option.



The 3.5" high resolution touchscreen provides a wealth of information.



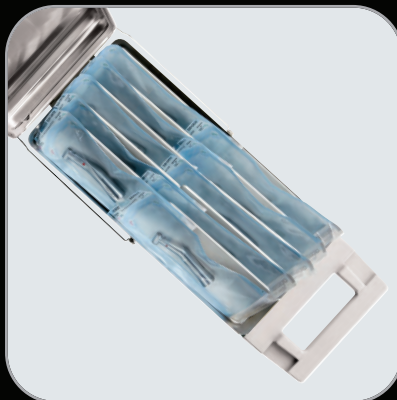
Access your STAT/M G4 via your networked portal.



The STAT/M G4 is capable of communicating directly with service personnel.



Wrapped dental handpieces in the STAT/M 2000 G4 cassette



Wrapped dental handpieces in the STAT/M 5000 G4 cassette

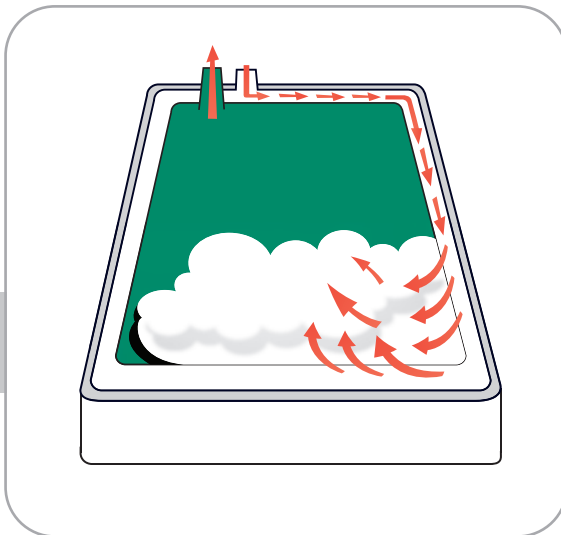


Wrapped phaco handpiece in the STAT/M 5000 G4 cassette

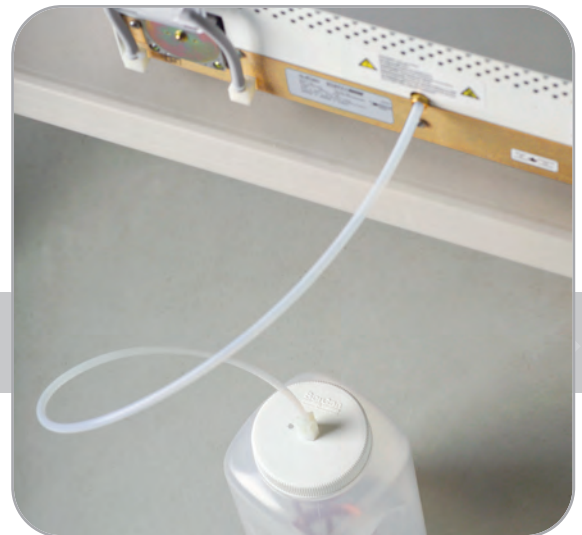
How STAT/M Works



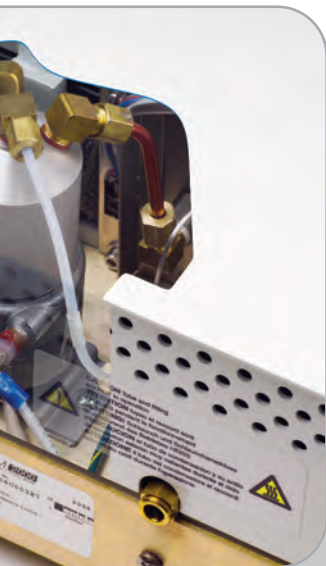
Ease of Operation



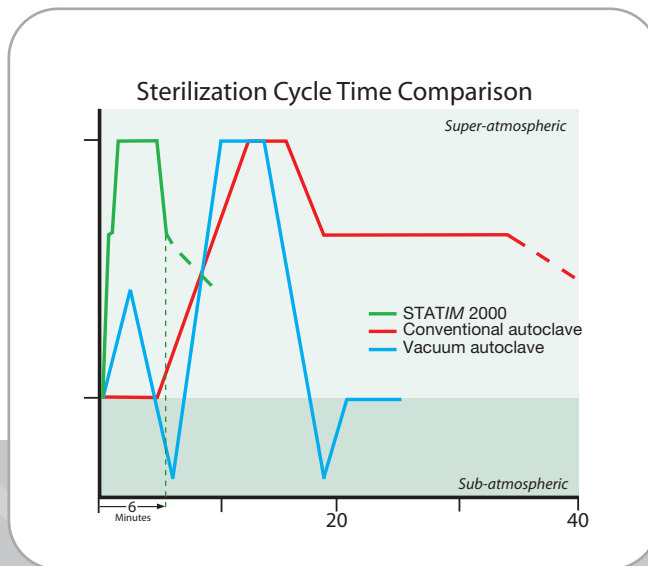
STAT/M 2000 G4/5000 G4 Steam Injection



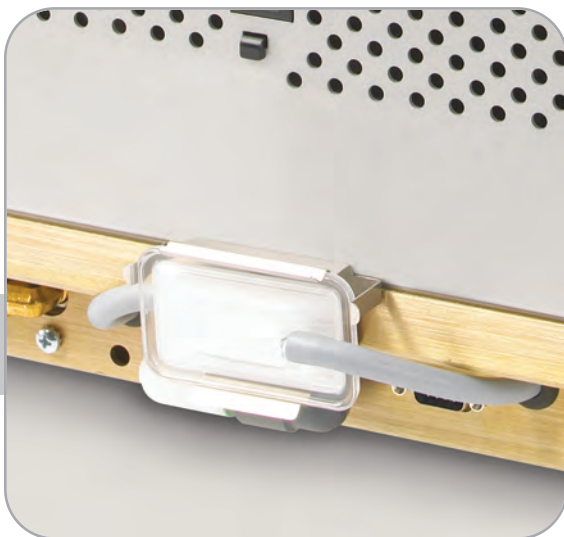
Single Use Water System



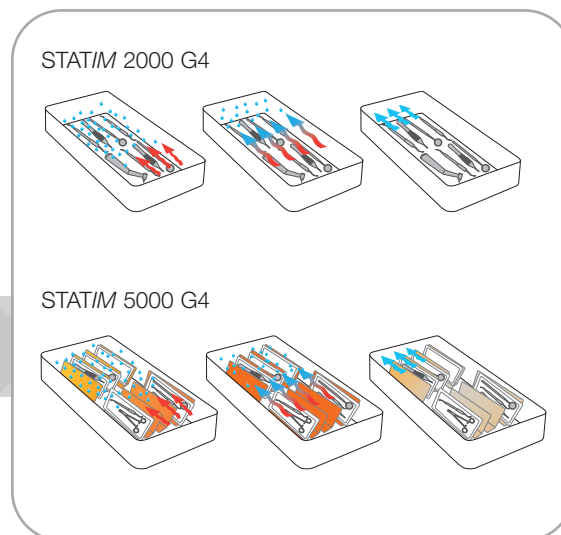
Small Steam Generator
for Instant Steam



Ultra Fast Condition Phase



Biological Filter



Dri-Tec Drying Technology

Cycle	Unwrapped	Wrapped	Rubber/Plastic	Heavy Duty Unwrapped / Air Drying
STAT/IM 2000 G4 Sterilization time Sterilization Temp Total Cycle time*	3.5 minutes 135°C 6 minutes	10 minutes 135°C 14 minutes	15 minutes 121°C 20 minutes	Air drying only Air drying only Air drying only
STAT/IM 5000 G4 Sterilization time Sterilization Temp Total Cycle time*	3.5 minutes 132°C 9 minutes	6 minutes 132°C 17.5 minutes	35 minutes 121°C 45 minutes	6 minutes 132°C 12 minutes

*Cycle time is dependent on instrument load.

STAT/IM 2000 G4

Unit size (L x W x H): 19.5" x 16.25" x 6" or 49.5 cm x 41.5 cm x 15 cm
Cassette internal dimensions: 11" x 7" x 1.4" or 28 cm x 18 cm x 3.5 cm
Weight without water: 46 lbs/21 kg
Power consumption: 115 V, 50/60 Hz, 15A/1450 W

STAT/IM 5000 G4

Unit size (L x W x H): 23.6" x 16.1" x 7.5" or 60 cm x 41 cm x 19 cm
Cassette internal dimensions: 15" x 7" x 3" or 38 cm x 18 cm x 7.5 cm
Weight without water: 73 lbs/33 kg
Power consumption: 115 V, 50/60 Hz, 15A / 1450 W

BRAVO™

Vacuum chamber autoclave



HYDRIM® L110w

Instrument washer



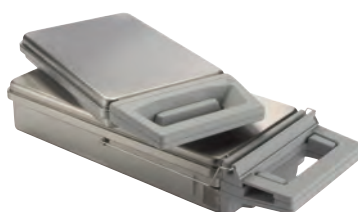
STATMat

STAT/IM® silicone mat



STAT/IM® cassettes

2000 and 5000



OPTIM® 33TB

Surface cleaner and disinfectant



STATFlow™

Direct-to-drain system



Manufactured by:

SciCan Ltd.
1440 Don Mills Road
Toronto, Ontario M3B 3P9
Canada
Phone (416) 445-1600
Fax (416) 445-2727
Toll Free 1-800-667-7733
custservice.ca@scican.com

SciCan Inc.
701 Technology
DriveCanonsburg PA, 15317
USAPhone (724) 820-1600Fax
(724) 820-1479Toll free 1-800
572-1211
uscustomerservice@scican.com

FOLLOW US ON:



Facebook: I love my STAT/IM



Twitter: @SciCan

SciCan Dental

Your Infection Control Specialist™

www.scican.com

SD-387/1-EN 5M 10/2012