

Frustrated with your vision?



Improving your lifestyle

The aging process is one thing that no one can stop, and as a consequence, your eyesight gradually deteriorates.

This can manifest itself in many ways, whether it is the onset of **presbyopia** or **cataracts**, coupled with possible existing conditions such as **myopia** and **hyperopia**. For you, it all leads to frustration.

You want to stay active in your life; however, your range of vision can slow you down. Therefore you turn to options such as contact lenses and spectacles for a solution. Or, like many people, you may not have addressed the problem yet and so have to compromise your lifestyle.

This no longer needs to be the case. Advancements in eye surgery and the **latest generation of intraocular lenses (IOLs)** allow your eye surgeon to offer options that will help you get on with living life, providing spectacle/contact lens independence.

**The ClearView 3** intraocular lens (IOL) **made by Lenstec** is one of the options available.

Conditions

Cataracts

are a common eye condition. With age the natural lens changes, can become cloudy and vision may become impaired. This can be corrected by removing the natural lens and replacing it with an artificial one.



Conditions

Myopia (near sightedness)

is when the image is focused in-front of the retina rather than directly on its surface, resulting in blurred distance vision.

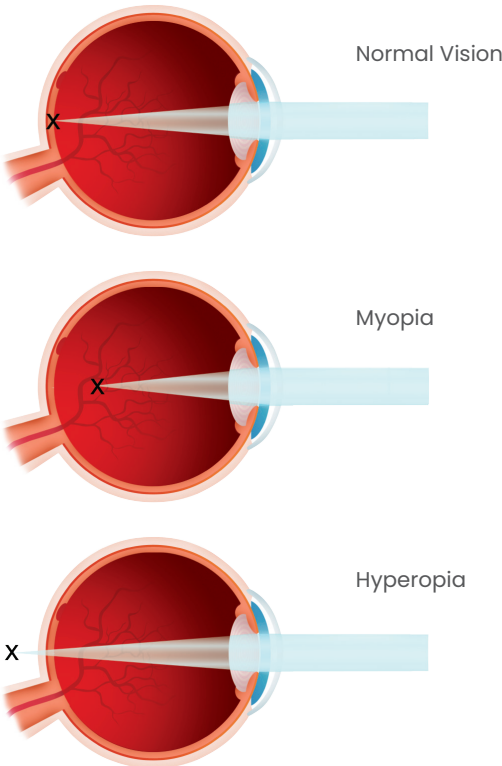
Hyperopia (far sightedness)

is when the image is focused behind the retina rather than directly on its surface, resulting in blurred near vision.

Presbyopia

is an age related condition where the human eye loses the ability to focus on near objects making it difficult to read and complete day to day tasks.

Key = X Demonstrates the focus point



There is an option

The ClearView 3 premium intraocular lens is designed to mimic the natural lens by achieving excellent distance, intermediate and near vision, leading to greater spectacle independence. With no concentric rings, patients reported a low incidence of visual disturbances such as glare and halos.



ClearView<sup>TM</sup> 3  
Multifocal IOL

Innovation & Accuracy by Design

Bi-Aspheric lenses mimic the natural focusing ability of the human eye. These lenses are used in high-end binoculars and cameras because they allow wider peripheral vision, visual range and depth of focus, creating the clearest of images.

Combined with micro-precision optics, manufactured with up-to 300% tighter tolerances than industry standard, the ClearView 3 intraocular lens provides an enhanced and accurate optic, resulting in a clearer focus for near, far and intermediate vision.





# ClearView™ 3

Multifocal IOL

Clinic Stamp:



[www.lenstec.com](http://www.lenstec.com)  
[www.clearviewlens.com](http://www.clearviewlens.com)

PKB87 Rev 5

# ClearView™ 3

The Next Generation  
Refractive Multifocal IOL



Embrace life with a **ClearView** at all distances

The ClearView 3 Multifocal lens implant for the treatment and correction of cataracts and presbyopia.

ClearView™ 3  
Multifocal IOL

